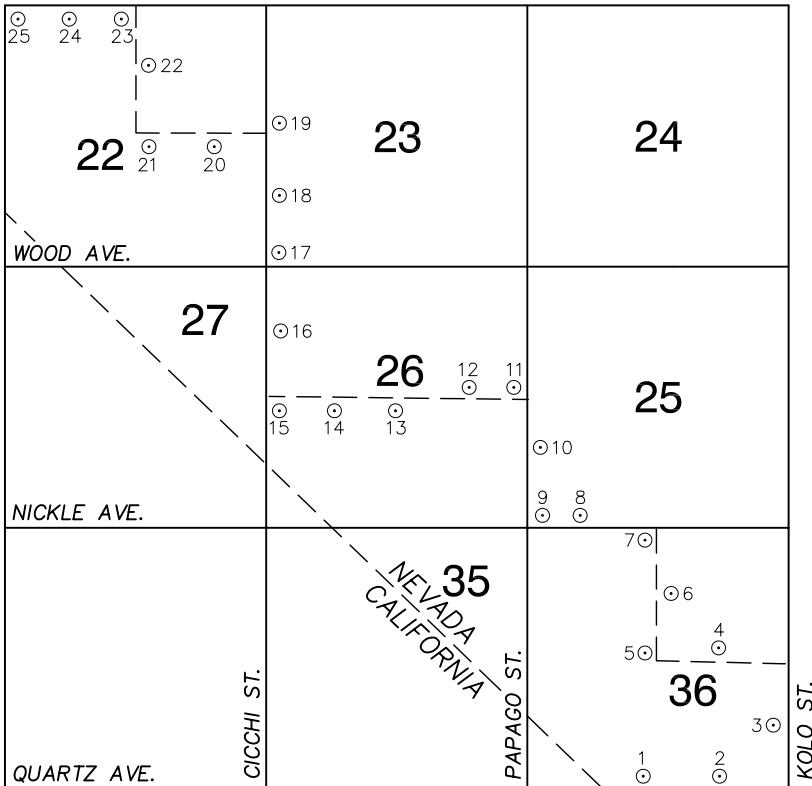


# Township 24 South, Range 56 East Southeast Quarter

DIAMOND AVE.



NORTH AMERICAN VERTICAL  
DATUM OF 1988  
- ALL ELEVATIONS IN METERS -

No.	STATION	ELEVATION (METERS)	DESCRIPTION
1	4C46 36S4 2004	797.096	RIVET AND ROUND ALUMINUM PLATE IN TOP OF CONCRETE CURBING, NEAR THE TRASH DUMPSTER, IN FRONT OF THE CLARK COUNTY FIRE DEPT., NORTHWEST CORNER OF QUARTZ AVE. AND OSAGE ST. (NORTH).
2	4C46 36SSE6 2004	798.169	RIVET AND ROUND ALUMINUM PLATE IN CONCRETE CYLINDER, NORTHEAST CORNER OF QUARTZ AVE. AND OMAHA ST. (NORTH), 3' NORTHEAST OF A TELEPHONE CABLE BOX.
3	4C46 36SEE6 2004	800.343	RIVET AND ROUND ALUMINUM PLATE IN CONCRETE CYLINDER, SOUTHWEST CORNER OF KOLO ST. AND PEARL AVE., 3' NORTH OF A TELEPHONE CABLE BOX.
4	4C46 36E6 2004	802.299	RIVET AND ROUND ALUMINUM PLATE IN CONCRETE CYLINDER, NORTH SIDE OF ONYX AVE., ± 120 FEET WEST OF OMAHA ST., 2' WEST OF A POWER POLE.
5	4C46 36C4 2004	801.428	RIVET AND ROUND ALUMINUM PLATE IN CONCRETE CYLINDER, NORTHWEST CORNER OF ONYX AVE. AND OSAGE ST., 5' EAST OF A POWER POLE.
6	4C46 36N6 2004	804.041	RIVET AND ROUND ALUMINUM PLATE IN CONCRETE CYLINDER, SOUTHEAST CORNER OF OSAGE ST. AND OBSIDIAN AVE., 2' SOUTH OF A POWER POLE.
7	4C46 36N4 2004	806.213	RIVET AND ROUND ALUMINUM PLATE IN NORTHEAST CORNER OF A CONCRETE ELECTRICAL PAD, SOUTHWEST CORNER OF OSAGE AVE. AND NICKEL AVE.
8	4C46 25SSW6 2004	804.986	RIVET AND ROUND ALUMINUM PLATE IN CONCRETE CYLINDER, NORTHWEST CORNER OF NICKLE AVE. AND OTTAWA ST., 2.5' EAST OF A POWER POLE.
9	4C46 25SWS 2004	803.785	RIVET AND ROUND ALUMINUM PLATE IN CONCRETE CYLINDER, NORTHEAST CORNER OF NICKEL AVE. AND PAPAGO ST., 3' WEST OF A POWER POLE.
10	4C46 25SWW6 2004	806.200	RIVET AND ROUND ALUMINUM PLATE IN CONCRETE CYLINDER, NORTHEAST CORNER OF PAPAGO ST. AND MOONSTONE AVE.
11	4C46 26E4 2004	808.813	RIVET AND ROUND ALUMINUM PLATE IN CONCRETE CYLINDER, NORTHWEST CORNER OF PAPAGO ST. AND MARBLE AVE., 3' WEST OF A POWER POLE.

## CLARK COUNTY VERTICAL CONTROL v.2003

CLARK COUNTY SURVEYOR'S OFFICE  
5051 SOUTH PARADISE ROAD  
LAS VEGAS, NEVADA 89119  
(702) 455-0640

CONVERSION FACTOR:  
METERS X  $\left(\frac{3937}{1200}\right)$  = U.S. SURVEY FEET

REVISED 02/14/2005	SHEET 1 OF 2	<b>24-56</b> <b>SE</b>
-----------------------	-----------------	---------------------------

No.	STATION	ELEVATION (METERS)	DESCRIPTION	No.	STATION	ELEVATION (METERS)	DESCRIPTION		
12	4C46 26E6 2004	806.798	S E T RIVET AND ROUND ALUMINUM PLATE IN CONCRETE CYLINDER, NORTHEAST CORNER OF MARBLE AVE. AND PEORIA ST., 3' EAST OF A TELEPHONE CABLE BOX.	25	4C46 22NWS 2004	819.625	S E T RIVET AND ROUND ALUMINUM PLATE IN CONCRETE CYLINDER, SOUTHEAST CORNER OF DIAMOND AVE. AND TUSKEGEE ST., 5' EAST A OF TELEPHONE CABLE BOX.		
13	4C46 26C4 2004	805.878	S E T RIVET AND ROUND ALUMINUM PLATE IN CONCRETE CYLINDER, SOUTHWEST CORNER OF MARBLE AVE. AND PIMA ST., 3' NORTH OF A POWER POLE.	26					
14	4C46 26W6 2004	805.822	S E T RIVET AND ROUND ALUMINUM PLATE IN CONCRETE CYLINDER, SOUTHWEST CORNER OF MARBLE AVE. AND POTOMAC ST., 2' WEST OF A POWER POLE.	27					
15	4C46 26W4 2004	806.402	S E T RIVET AND ROUND ALUMINUM PLATE IN NORTHWEST CORNER OF AN ELECTRICAL PAD, SOUTHEAST CORNER OF MARBLE AVE. AND CICCHI ST., ± 197' SOUTH OF MARBLE AVE.	28					
16	4C46 26NWW6 2004	807.456	S E T RIVET AND ROUND ALUMINUM PLATE IN CONCRETE CYLINDER, NORTHEAST CORNER OF CICCHI ST. AND LAVA AVE., 1' NORTH OF A POWER POLE.	29					
17	4C46 23SWS 2004	808.823	S E T RIVET AND ROUND ALUMINUM PLATE IN CONCRETE CYLINDER, EAST SIDE OF CICCHI ST., ± 155' NORTH OF WOOD AVE., 3' NORTH OF A POWER POLE.	30					
18	4C46 23SWW6 2004	810.370	S E T RIVET AND ROUND ALUMINUM PLATE IN CONCRETE CYLINDER, EAST SIDE OF CICCHI ST., ± 88' SOUTH OF GYPSUM AVE., 2.5' EAST OF A TELEPHONE CABLE BOX.	31					
19	4C46 23W4 2004	813.448	S E T RIVET AND ROUND ALUMINUM PLATE IN CONCRETE CYLINDER, NORTHEAST CORNER OF CICCHI ST. AND GOLD AVE., 4' WEST OF A POWER POLE.	32					
20	4C46 22E6 2004	813.006	S E T RIVET AND ROUND ALUMINUM PLATE IN CONCRETE CYLINDER, SOUTHEAST CORNER OF GOLD AVE. AND SHASTA ST., 1' EAST OF A POWER POLE.	33					
21	4C46 22C4 2004	814.105	S E T RIVET AND ROUND ALUMINUM PLATE IN CONCRETE CYLINDER, SOUTHEAST CORNER OF GOLD AVE. AND SHOSHONE ST., 2' WEST OF POWER POLE.	34					
22	4C46 22N6 2004	816.382	S E T RIVET AND ROUND ALUMINUM PLATE IN CONCRETE CYLINDER, NORTHEAST CORNER OF SHOSHONE ST. AND EMERALD AVE., 2.5' EAST OF A POWER POLE.	35					
23	4C46 22N4 2004	819.484	S E T RIVET AND ROUND ALUMINUM PLATE IN CONCRETE CYLINDER, SOUTHWEST CORNER OF SHOSHONE ST. AND DIAMOND AVE., 3' NORTH OF A POWER POLE.	<b>CLARK COUNTY VERTICAL CONTROL v.2003</b>  CLARK COUNTY SURVEYOR'S OFFICE 5051 SOUTH PARADISE ROAD LAS VEGAS, NEVADA 89119 (702) 455-0640				CONVERSION FACTOR: METERS X $\left(\frac{3937}{1200}\right)$ = U.S. SURVEY FEET	
24	4C46 22NNW6 2004	819.108	S E T RIVET AND ROUND ALUMINUM PLATE IN CONCRETE CYLINDER, SOUTHEAST CORNER OF DIAMOND AVE. AND TETON ST., 3' EAST OF A POWER POLE, 8' WEST OF A TELEPHONE CABLE BOX.					<b>REVISED</b> <b>02/14/2005</b>	